

Balloon
Pos.
Qty.

B

C

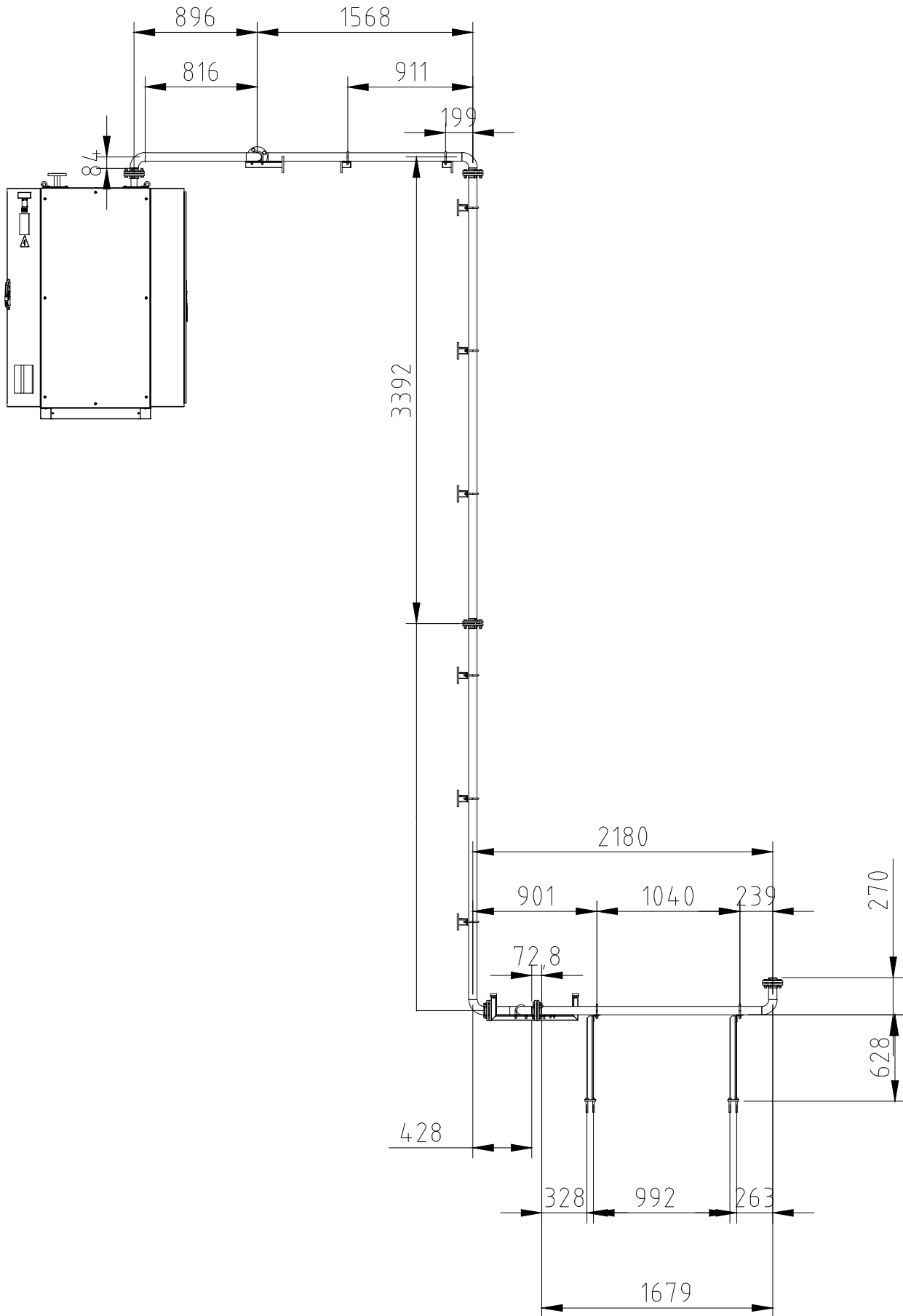
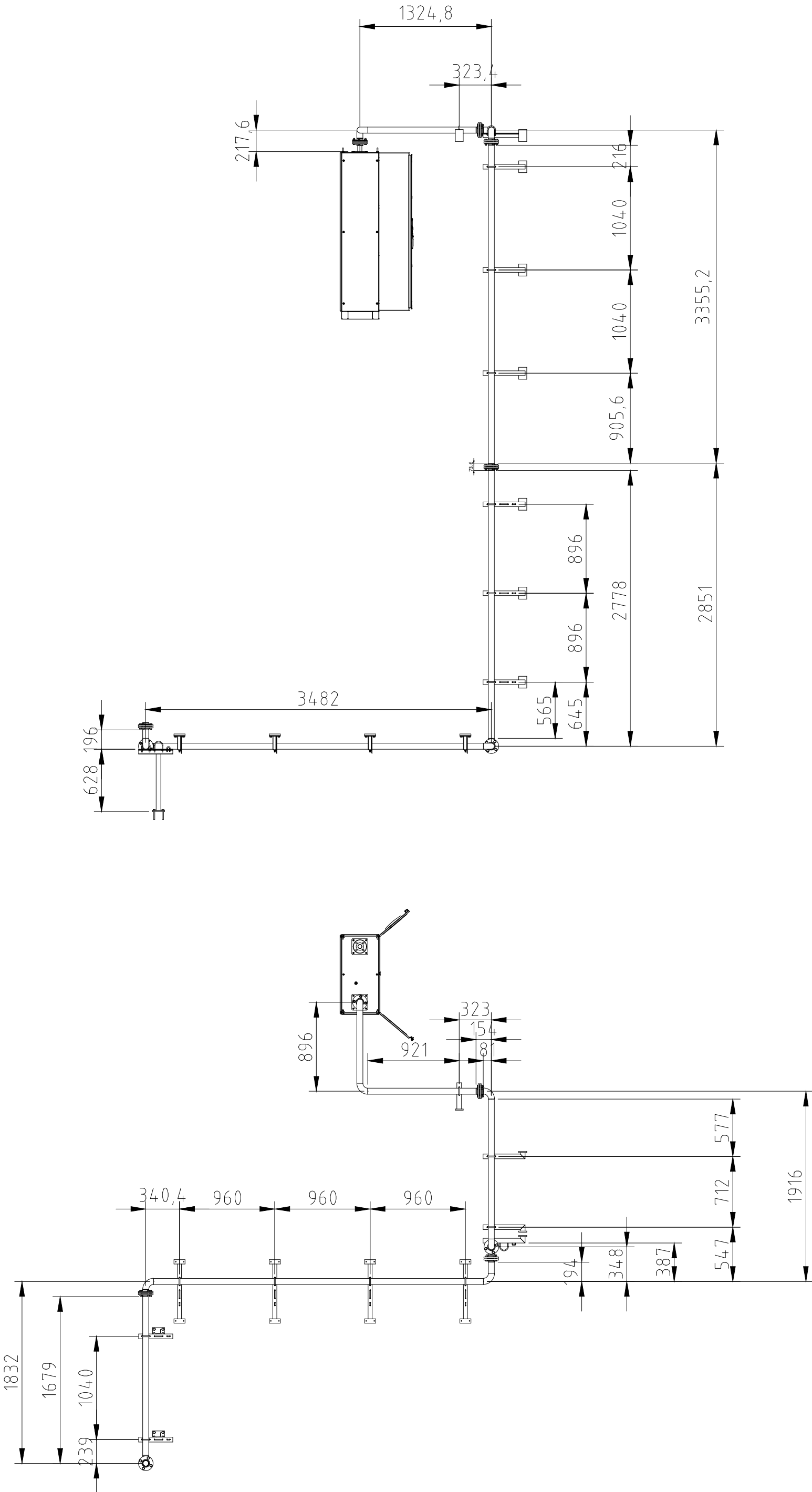
D

E

F

G

This drawing belongs to IFI Industrial Furnaces INSERTED and must not be used or reproduced without authorization.



UNSPECIFIED WELDS:

JOINT WITHOUT BEVEL 70% 40% JOINT WITH BEVEL 70% 50-100 70% 50-100 REINFORCEMENT JOINT 80% PIPE/PROFILE JOINT 40% 40% PLATE SPLICING

Note: Percentage (%) of the weld in relation to the smallest section of the weld joint.

Non-individual tolerances according to DIN 7168.						Drawn 3D: Brajan IDDTEK.					
Angular Tolerance	Nominal Dimension	0-10	10-50	50-120	120-400	>400	Drawn 2D: Brajan IDDTEK.				
	Angular Tolerance	±1°	±0,5°	±0,33°	±0,16°	±0,083°		Date: 1/12/2025	1st Dihedral	ISO 5456-2	
Linear Tolerance	Nominal Dimension	0-6	6-30	30-120	120-315	315-1000	>1000				
	Linear Tolerance	±0,1	±0,2	±0,3	±0,5	±0,8	±1,2				

Designation:
Oxygen Route

Equipment:
TMT (FVRB-2,7-25)

Rev. **C**

N° Drawing:
2558-3321-TMT-ESR30

Scale 1:40	Weight (kg)	Sheet 2 of 3	Format A2
---------------	-------------	-----------------	--------------

A

B

C

D

E

F

G

H

7

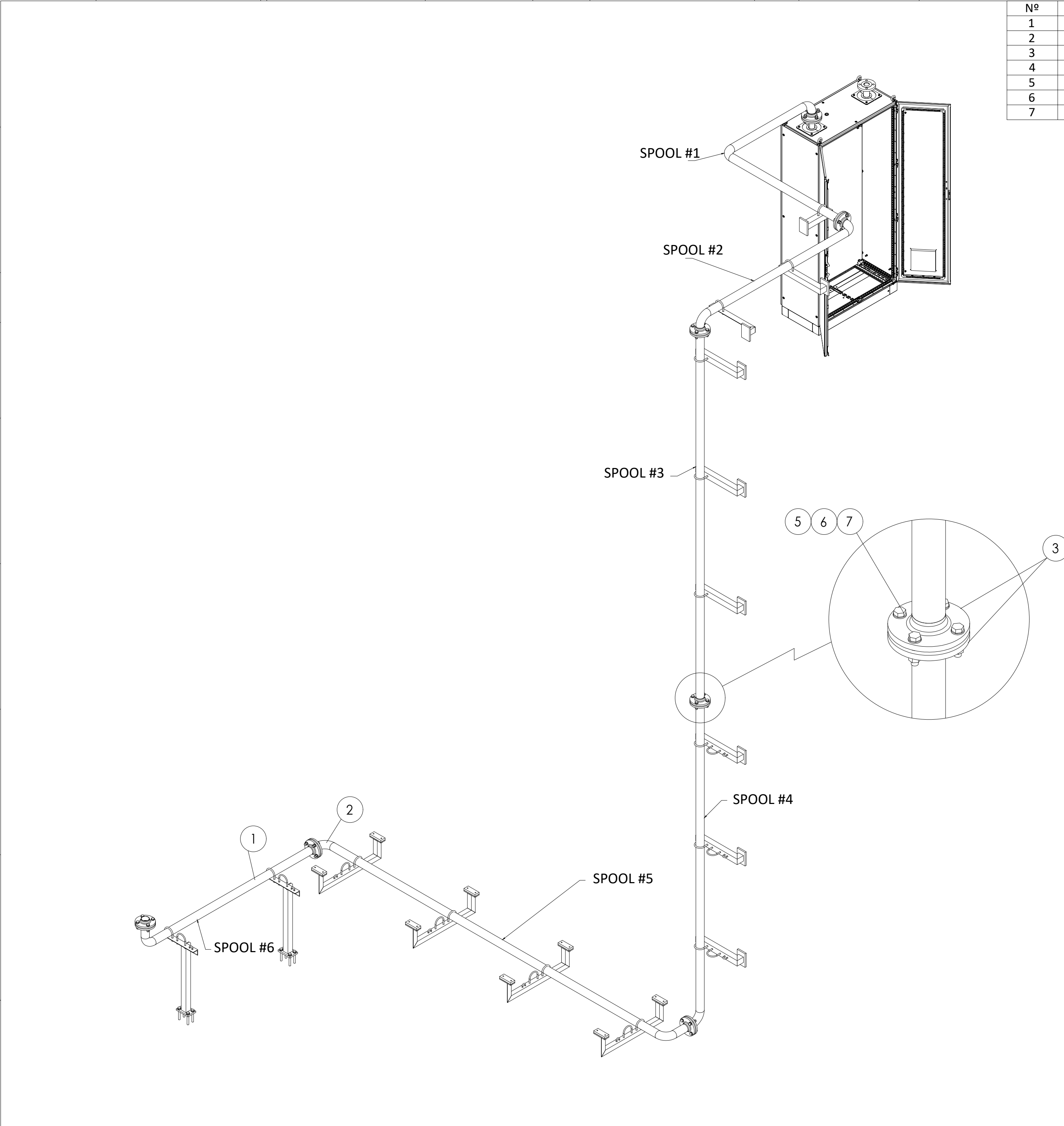
8

9

10

Balloon
Pos.
Qty.

This drawing belongs to IFI Industrial Furnaces INSERTED and must not be used or reproduced without authorization.



Nº	MATERIAL	QTY
1	PIPE 2.1/2" SCH-10S ASTM A312 TP-316L (SEAMLESS)	20m
2	ELBOW 90° DN65 THICKNESS 2.9MMS RADIUS 3D BW ASTM A312 TP-316L	8
3	WN FLANGE DN65 PN16 DIN2633 BW ASTM A312 TP-316L	14
4	GASKET DN65 PN16 3MMS DIN2690 KLINGERSIL C-4430	7
5	HEXAGONAL BOLT M16 x 70 A2-80 DIN 933	28
6	HEXAGONAL NUT M16 A2-80 DIN 934	28
7	WASHER M8 A2-80 DIN 127	56

UNSPECIFIED WELDS:

70% JOINT WITHOUT BEVEL 40% JOINT WITH BEVEL 70% 50-100 REINFORCEMENT JOINT 80% PIPE/PROFILE JOINT 40% 40% PLATE SPLICING

Note: Percentage (%) of the weld in relation to the smallest section of the weld joint.

Non-individual tolerances according to DIN 7168.						Drawn 3D: Brajan IDDTEK.	
Angular Tolerance	Nominal Dimension	0-10	10-50	50-120	120-400	>400	
	Angular Tolerance	±1°	±0,5°	±0,33°	±0,16°	±0,083°	
Linear Tolerance	Nominal Dimension	0-6	6-30	30-120	120-315	315-1000	>1000
	Linear Tolerance	±0,1	±0,2	±0,3	±0,5	±0,8	

Designation: Oxygen Route

Equipment: TMT (FVRB-2,7-25)

Rev. **C**

N° Drawing: 2558-3321-TMT-ESR30

Scale 1:40	Weight (kg)	Sheet 1 of 3	Format A2
------------	-------------	--------------	-----------

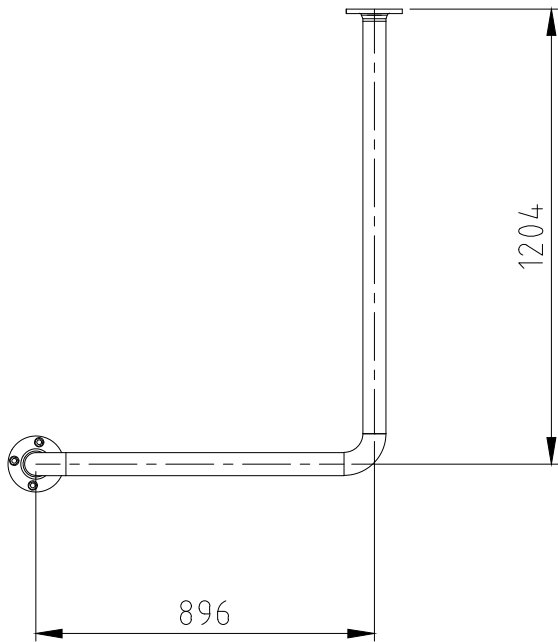
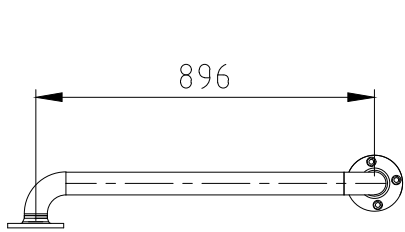
insertec
Furnaces & Refractories

1st Dihedral ISO 5456-2

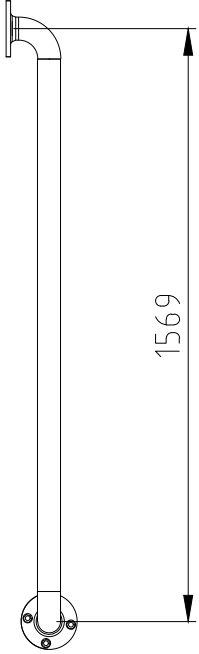
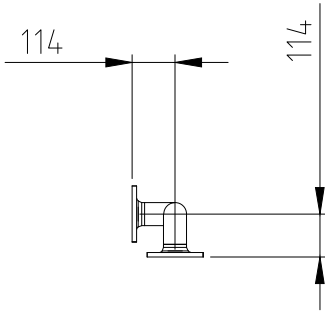
Balloon
Pos.
Qty.

This drawing belongs to IFI Industrial Furnaces INSERTED part, carefully review the drawing and clarify all doubts.

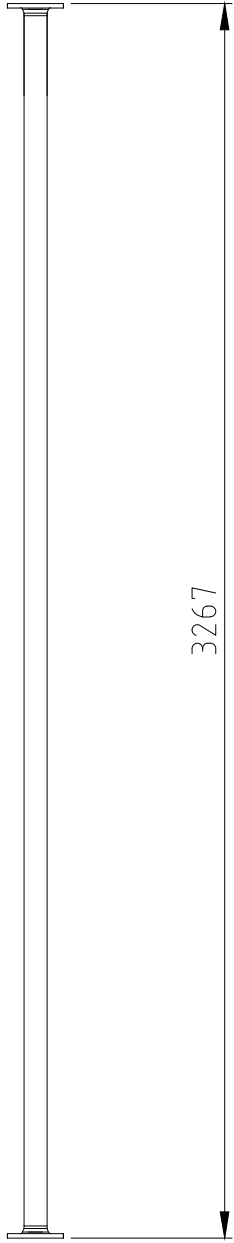
Before manufacturing this part, carefully review the drawing and clarify all doubts.



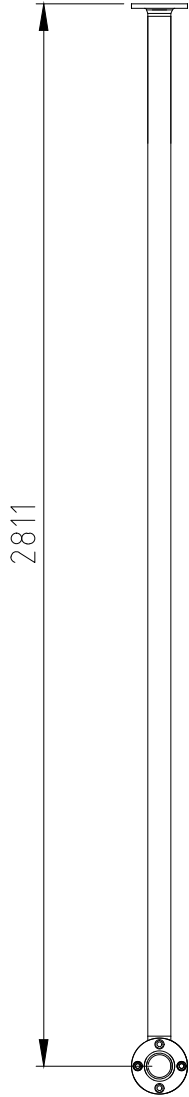
SPOOL #1



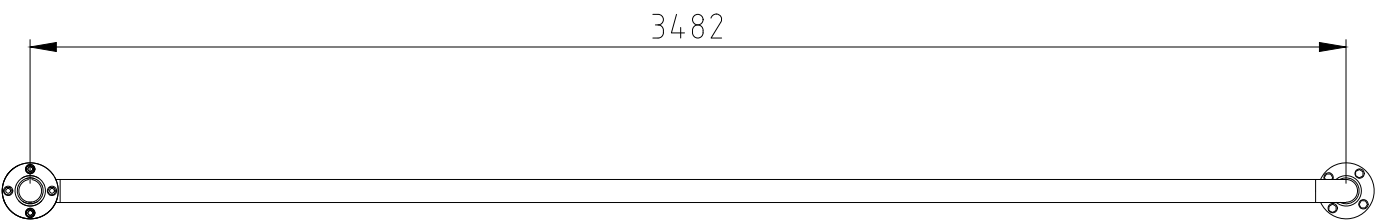
SPOOL #2



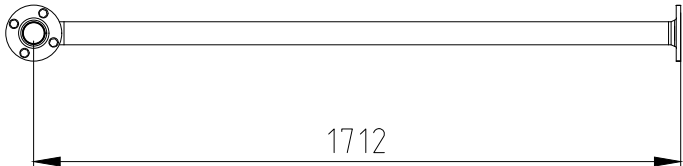
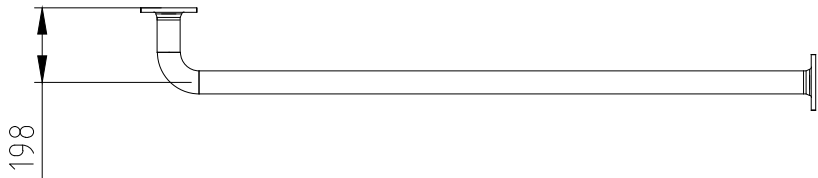
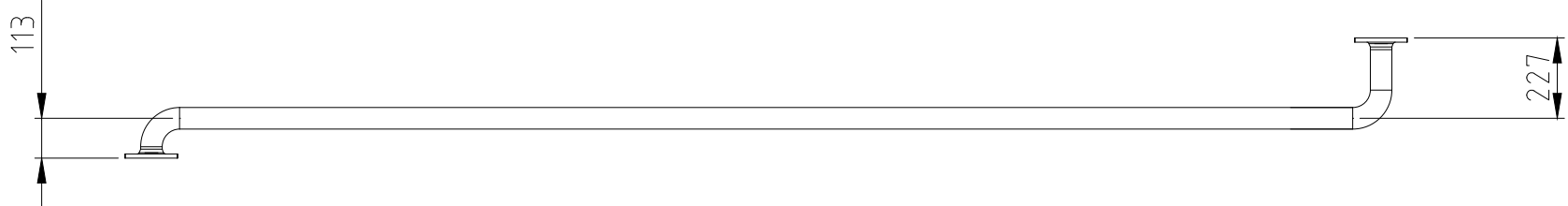
SPOOL #3



SPOOL #4



SPOOL #5



SPOOL #6

UNSPECIFIED WELDS:

70% JOINT WITHOUT BEVEL

40% JOINT WITH BEVEL

70% 50-100 REINFORCEMENT JOINT

80% PIPE/PROFILE JOINT

40% 40% PLATE SPLICING

Note: Percentage (%) of the weld in relation to the smallest section of the weld joint.

Non-individual tolerances according to DIN 7168.						Drawn 3D: Brajan IDDTEK.	
Angular Tolerance	Nominal Dimension	0-10	10-50	50-120	120-400	>400	Drawn 2D: Brajan IDDTEK.
	Angular Tolerance	±1°	±0,5°	±0,33°	±0,16°	±0,083°	
Linear Tolerance	Nominal Dimension	0-6	6-30	30-120	120-315	315-1000	Date:
	Linear Tolerance	±0,1	±0,2	±0,3	±0,5	±0,8	1/12/2025

Designation:

Oxygen Route

Equipment:

TMT (FVRB-2,7-25)

Rev.

C

N° Drawing:

2558-3321-TMT-ESR30

Scale	Weight (kg)	Sheet	Format
1:20		3 of 3	A2

insertec

Furnaces & Refractories

1st Dihedral

ISO 5456-2